

JACK OF ALL TRADES

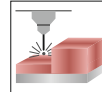
3D Texturing - Engraving - Precision Hallmarking - 3D Engraving - Color annealing
Taper free drilling (Thin Materials) - Special Ceramic Processing - Leather texturing



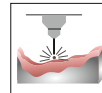
Track & Trace Ready*



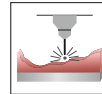
Vision Inspection System*



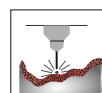
Step Marking / Engraving



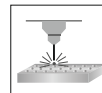
Freeform 3D Texturing



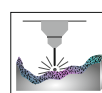
3D Deep Engraving



3-Axis Marking/Engraving



Drilling



3D Annealing



3D Organic / Geometric textures on curved & freeform surfaces



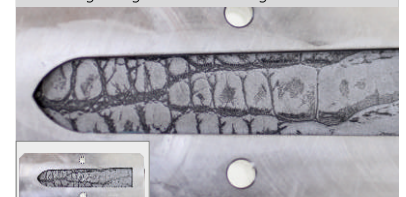
Laser machining of watch bazzels



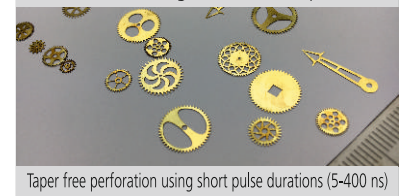
3D engraving on ceramics



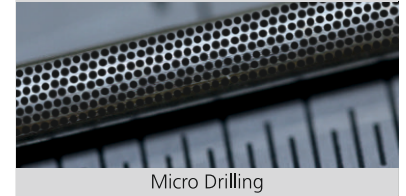
Fine engraving on cold working hardened steel



Laser texturing on watch strap die



Taper free perforation using short pulse durations (5-400 ns)



Micro Drilling



3D Deep Engraving on Hardened, Cold working steel Bohler K110-HRC-60-62

**Special Ceramics - Hardened steels - Brass - Gold - Silver
Aluminium - Stainless Steel - Copper**

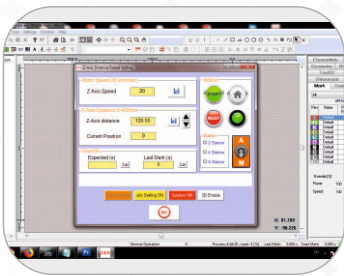
Features:-

- Unlimited number of usage hours on the laser source during the 2 year warranty** period.
- Optional granite base and granite axis portal for highest level of precision and repeat accuracy.
- Programmable Servo Z Axis with positioning accuracy of $\pm 50 \mu\text{m}$.
- Safety - Class I Safety with motor driven electrical safety door and laser protection glass.
- Small machine footprint.
- Caster wheels for convenient movement and anti-vibration pads for added stability.

Technical Specifications

	Class I
	Max. Workpiece Weight <40 kg
	Nominal Parts Dimensional 3000X500X200 mm
	Materials Metal, Plastic, Composite
	Machine Dimension 882x1100x1890 mm
	Safety Goggles Always wear safety goggles

Supplementary Options



Customized User Control Interface :-
Alarm, Authentication level
Database integration, Production log
& sensors control interface etc



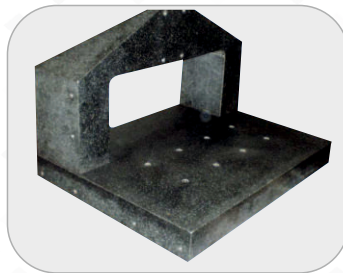
Motorized Rotary
Axis



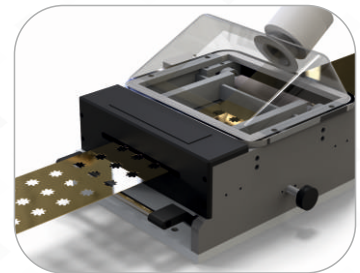
Motorized XY Axis
for Pelletization



Force 3+
Fume Extractor



Granite Base
& Z-Axis Portal



Sliding Mechanism
for Cutting

Spinks Impex : Plot no.81, Pace City-1,
Sec 37 Gurugram 122001, Haryana. India.
+91 9999902126, +91 9210626626

Email : info@markolaser.com
3d@markolaser.com



www.markolaser.com
www.jewelaser.com



service@markolaser.com

SwissTech Innovations

11 ch.des, Léchères 1217

Meyrin,

Switzerland

: +41(0)22.757.74.01/02/03

Email : yg@swisstech-innovations.ch

